



Solar streetlight with high supply security

Applications

The solar light TOWERSUN is a solar-powered LED streetlight that can be used anywhere where there is no power supply and high supply security is required even during poor lighting conditions. Thanks to the cubistic aluminium structure with 2x4 photovoltaic modules, sufficient energy can be generated by means of diffuse light especially in poor weather regions.

The perpendicular placement of the modules prevents snow accumulation in winter. Ingenious energy-saving functions guarantee secure functioning over several nights even during bad weather. As per DIN EN13201, based on its lighting performance the TOWERSUN is highly recommended for residential streets, side streets, parking areas etc.

Function:

The integrated battery is charged during the day via the 8 photovoltaic modules, and when twilight comes this energy is used for the efficient operation of the LED head.

Optional:

- In addition to the standard colour anthracite, the TOWERSUN can also be ordered in other RAL colours at an additional charge
- IR Remote for changing the time management

Technical data

Photovoltaic energy-pillar		Energy- and time-management:		
Modules	8 pcs, mono crystalline silicium cells	Function	Light output	Time
Output Pmpp (maximum)	128W (8 modules) The modules are loaded also at diffuse light (8 to 15% of the module performance)	Dimming	50%	24:00-5:00
Battery	1x 36Ah NiMh (high temperature battery)	Switching off	0%	24:00-5:00
Battery life	approx. 5-6 years (depends on temperature)	Continuous illumination* (with energy- management)	100%	Shines all night
Operating temperature	-20°C to 50°C	*We recommend the continuous illumination of the TOWERSUN only in countries where an extreme amount of sun shines in.		
Guarantee	2 years	IR-Remote Optional with IR- Remote control the factory setting could be changed afterwards		
Dimensions energy-pillar	237mmx237mmx1310mm	Dimensions and weight for transport (single dispatch)		
Protection type	IP65	Light head in box		
Efficiency	17%	- Dimensions		
		220mmx600mmx120mm		
		- Weight		
		3kg		
		Battery		
		- Dimensions		
		1.200mmx180mmx190mm		
		- Weight		
		17kg		
		Photovoltaic energy-pillar		
		- Dimensions		
		180mmx300mmx300mm		
		- Weight		
		40kg		
		Pole in round box		
		- Length		
		5.100mm		
		- Diameter		
		110mm		
		- Weight		
		35kg		
Illuminant				
Number of LED	16 pcs High-Power-LED			
Light colour	6.500K cool white			
Luminous flux	1.360lm			
Illuminance	up to 13lx (see LVK)			
Measurements light head	488mmx84,5mmx96mm			
LED life	> 50.000h			
State-of-the-art LED	Insect-neutral light			
Measurements				
Total height by ground level	5.245mm			
Light spot height by ground level	3.800mm			
Total length pole	4.250mm			
Length pole mounted in the ground	750mm			
Material pole	Powder coated steel / Anthracite			

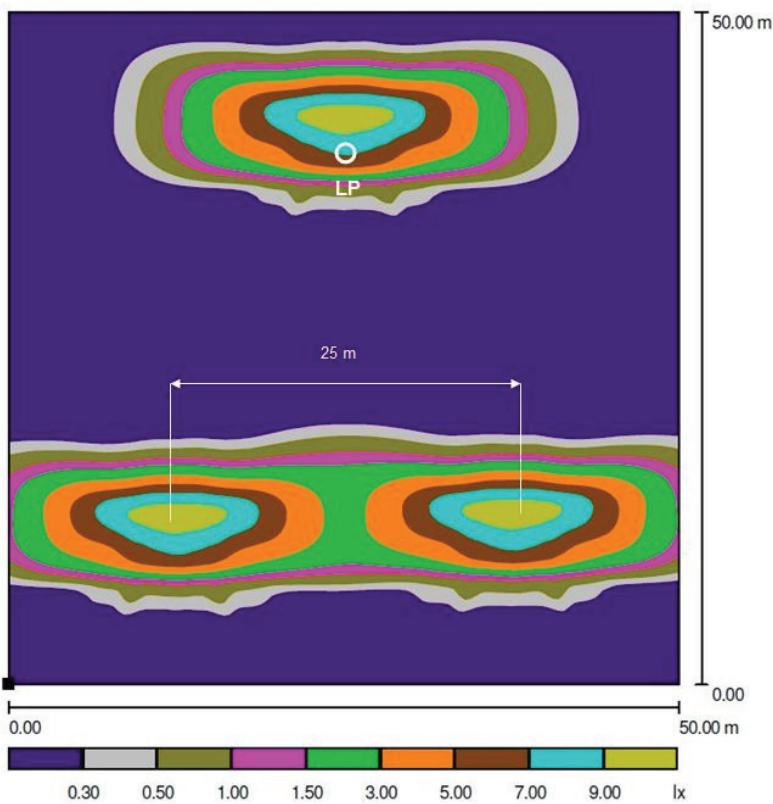
Technical data

Maintenance cycles / Warranty	
Recommended battery replacement	after 6 years
Recommended LED replacement	after 12 years
Guarantee*	2 years (incl. battery)
With 100% product guarantee	2 years
For 90% minimum performance	5 years
For 80% minimum performance	10 years

* the guarantee running time gets on as of production date

Possibilities of installation in soil	
Pipe base KRINNER ground screw	KSF FEL 140mmx1600mm (leaving technical changes)

DIALUX Light intensity distribution curve (LVK) - Single- and double-view



Example: pole distance 25m

Measurements

