



Solar street lighting with variable, technical possibilities

Applications:

The WORKSUN is a flexible Solar LED light for outdoor use.

The outdoor light is working with the energy from the solar panel without connection to the mains supply.

Based on the modular concept the WORKSUN could quick and simple assembled and dismantled with the use of a ground screw.

The high efficient LED light will fit the DIN EN 13201.

Typical usages are building sites, container buildings, car parks, driveways, open-air events, etc.

Function:

The integrated battery is charged during the day. In the twilight the LED light is activated automatically.

On/off times during the night could be configured on suite by the customer via the optional IR Remote control panel.

Set included:

Solar module - LED head with control panel - Integrated battery - Pole.

Optional:

Special floor screwing plug for the reliable and fast assembly on defined underground IR Remote for changing the time management.

Technical data

Photovoltaic module		Energy- and time-management:		
Module	polycrystalline silicon cells	Function	Light output	Time
Performance module	65W	Dimming	50%	24:00-5:00
Measurements module	785mmx676mmx38mm	Switching off	0%	24:00-5:00
Efficiency	16%	Continuous illumination* (with energy- management)	100%	Shines all night
Weight	approx. 6,1kg			
Battery		*We recommend the continuous illumination of the WORKSUN only in countries where an extreme amount of sun shines in.		
Battery	3x 12Ah (SI/L) silicon cells	IR-Remote Optional with IR- Remote control the factory setting could be changed afterwards		
Battery life	approx. 3-4 years (depends on temperature)			
Operating temperature	-35°C to +45°C			
LED light head		Dimensions and weight for transport (single dispatch)		
Number of LED	8 pcs High-Power-LED	Light head in box		
Light colour	6.500k cool white	- Dimensions	110mmx600mmx120mm	
Luminous flux	680lm	- Weight	7kg	
Illuminance	up to 6lx (see LVK)	Battery		
Measurements light head	488mmx84,5mmx96mm	- Dimensions	1.200mmx180mmx190mm	
LED life	> 50.000h	- Weight	17kg	
Protection class	IP65	Module		
State-of-the-art LED	Insect-neutral light	- Dimensions	720mmx820mmx240mm	
		- Weight	7kg	
Measurements		Pole in round box		
Total height by ground level	4.650mm	- Length	5.100mm	
Light spot height by ground level	3.800mm	- Diameter	110mm	
Total length pole	5.000mm	- Weight	35kg	
Length pole mounted in the ground	750mm			
Material pole	galvanized steel			
Krinner screw foundation in box				
- Length	1.100mm			
- Diameter	150mm			
- Weight	7,5kg			

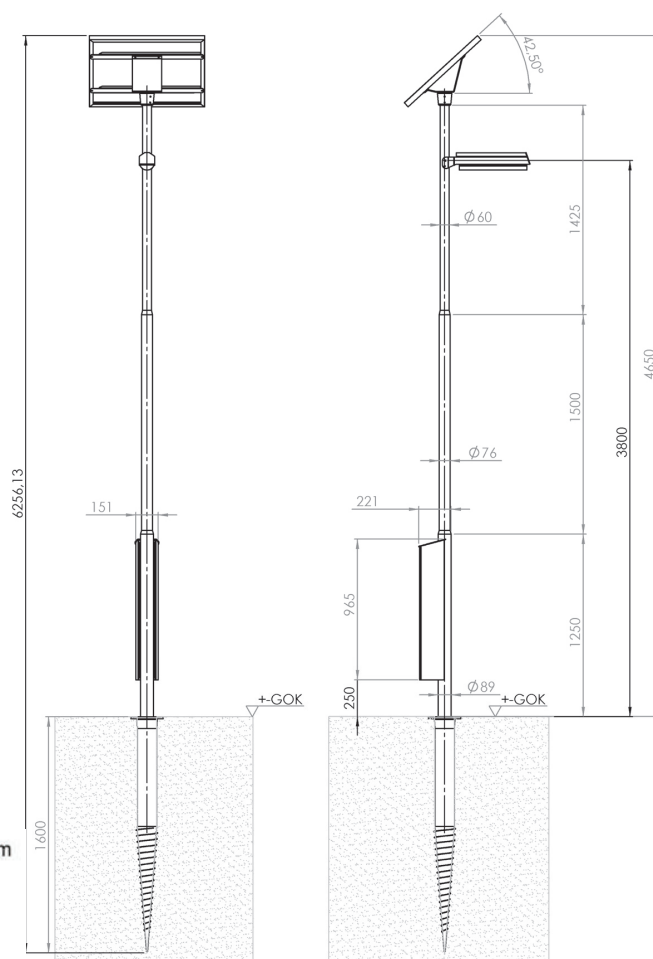
Technical data

Maintenance cycles / Warranty	
Recommended battery replacement	after 4 years
Recommended LED replacement	after 12 years
Guarantee*	2 years (incl. battery)
With 100% product guarantee	2 years
For 90% minimum performance	5 years
For 80% minimum performance	10 years

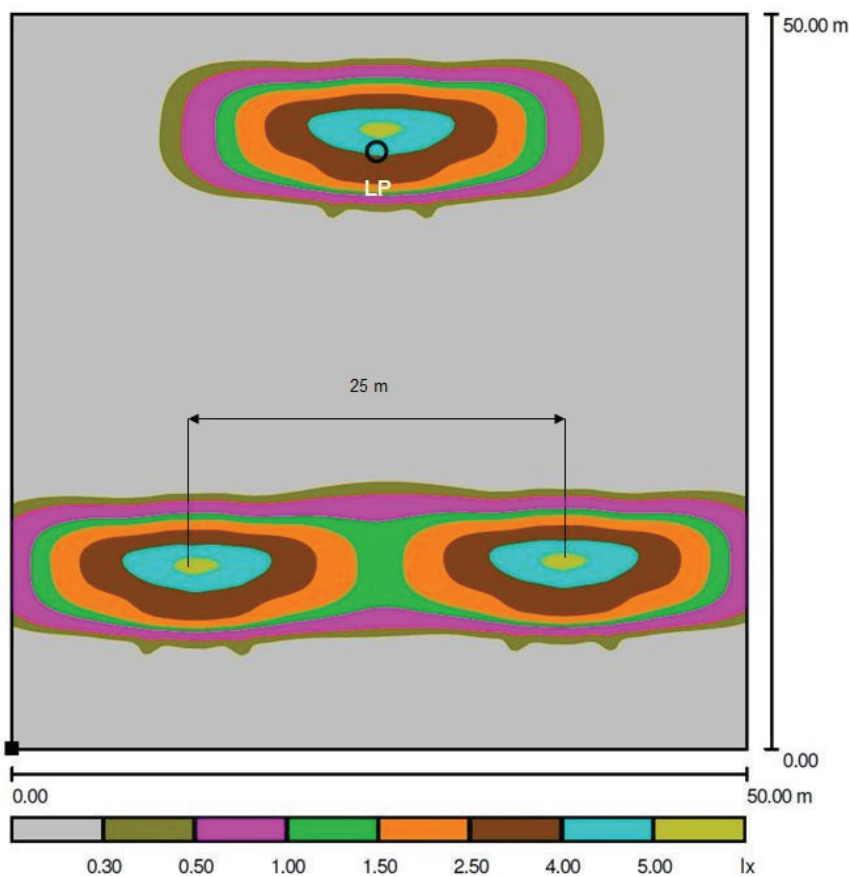
* the guarantee running time gets on as of production date

Possibilities of installation in soil	
Pipe base KRINNER ground screw	KSF FEL 140mmx1600mm (leaving technical changes)

Measurements



DIALUX Light intensity distribution curve (LVK) - Single- and double-view



Example: pole distance 25m